

Anti-GPRC5B Rabbit Monoclonal Antibody
Catalog # ABO16422**Specification**

Anti-GPRC5B Rabbit Monoclonal Antibody - Product Information

Application	WB
Primary Accession	Q9NZH0
Host	Rabbit
Isotype	IgG
Reactivity	Human
Clonality	Monoclonal
Format	Liquid

Description

Anti-GPRC5B Rabbit Monoclonal Antibody . Tested in WB application. This antibody reacts with Human.

Anti-GPRC5B Rabbit Monoclonal Antibody - Additional Information

Gene ID 51704

Other Names

G-protein coupled receptor family C group 5 member B, A-69G12.1, Retinoic acid-induced gene 2 protein, RAIG-2, GPRC5B, RAIG2

Calculated MW

52 kDa KDa

Application Details

WB 1:500-1:2000

Contents

Rabbit IgG in phosphate buffered saline, pH 7.4, 150mM NaCl, 0.02% sodium azide and 50% glycerol, 0.4-0.5mg/ml BSA.

Immunogen

A synthesized peptide derived from human GPRC5B

Purification

Affinity-chromatography

Storage

Store at -20°C for one year. For short term storage and frequent use, store at 4°C for up to one month. Avoid repeated freeze-thaw cycles.

Anti-GPRC5B Rabbit Monoclonal Antibody - Protein Information

Name GPRC5B

Synonyms RAIG2**Function**

G-protein coupled receptor involved in the regulation of cell volume.

Cellular Location

Cell membrane; Multi-pass membrane protein. Cytoplasmic vesicle membrane; Multi-pass membrane protein. Note=Localized in the plasma membrane and perinuclear vesicles

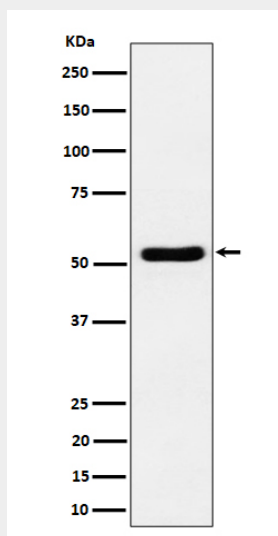
Tissue Location

Expression is high in kidney, pancreas, and testis, medium in brain, heart, prostate, small intestine, and spleen, low in liver, placenta, skeletal muscle, colon, ovary, and thymus, and not detectable in lung and peripheral leukocyte. According to PubMed:10945465, highly expressed in most brain areas examined, with the highest levels observed in corpus callosum, caudate nucleus, putamen, substantia nigra, thalamus, hippocampus, and spinal cord as well as in dorsal root ganglia (DRG). Expressed in glia limitans, ependymal cells, astrocyte cell bodies, the perivascular region in astrocyte endfeet, but not in neurons (PubMed:37143309). In the periphery, expression levels are relatively low, compared to the CNS, with the strongest expression detected in pancreas, testis, uterus, and stomach.

Anti-GPRC5B Rabbit Monoclonal Antibody - Protocols

Provided below are standard protocols that you may find useful for product applications.

- [Western Blot](#)
- [Blocking Peptides](#)
- [Dot Blot](#)
- [Immunohistochemistry](#)
- [Immunofluorescence](#)
- [Immunoprecipitation](#)
- [Flow Cytometry](#)
- [Cell Culture](#)

Anti-GPRC5B Rabbit Monoclonal Antibody - Images

Western blot analysis of GPRC5B expression in Jurkat cell lysate.